

NL-FNT-1201PLED



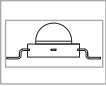
APPLICATIONS



IP-68

LAMP SUITABILITY

1 W
POWER
LED



DIMENSIONS

Luminaire

Max.
Depth.
90mm

Max.
Dia.
160mm

ORDER CODE

LUMINAIRE CODE	LAMP TYPE	OPTICS
NL-FNT-1201PLED-CW	12 Nos 1W LED-CW	30Deg. Beam
NL-FNT-1201PLED-RGB	12 Nos 1W LED-RGB	30Deg. Beam

MOUNTING SUITABILITY

ON FOUNTAIN SPOUT

DESCRIPTION

'NOVA'

NOZZLE PASS TYPE FOUNTAIN LIGHT

Material of construction: Marine Grade 304, Stainless steel

Stainless steel housing, duly machined and polished. SS Flange, .

With Power LED lamps, mounted on an aluminium sandwiched PCB board, The luminaire shall be provided with internal thermal management heat sink for LED junction Temperature. Suitable for operation on constant current driver.

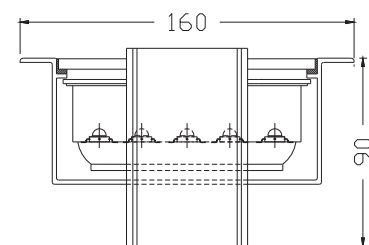
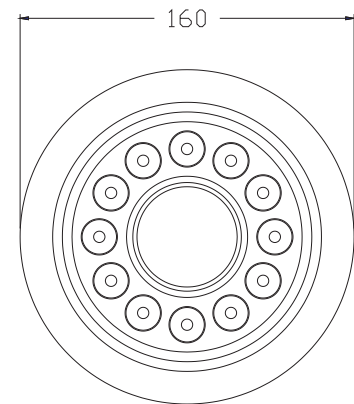
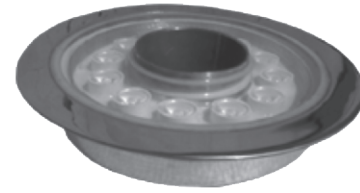
Toughened glass diffuser, silicone sealed to ensure complete water ingress protection. IP68

Non hygroscopic copper wire PVC sheathed cable of adequate length is provided. Cable exit through water proof sealed gland.

Additional housing for wall / floor embedded mounting

Remote Heavy duty electronic LED Driver recommended.

Driver to separate detail.



NOTE

UNDERWATER LIGHTING

UW-07

NOVA-LEDs
Energreen Lighting