

NL-SLT-SLR-1E30-12V



APPLICATIONS



IP-66

LAMP SUITABILITY

30W
CFL
12V



DIMENSIONS

Luminaire

Max. Length.	Max. Width.	Max. Depth.
300mm	120mm	70mm

ORDER CODE

LUMINAIRE CODE	LAMP TYPE	OPTICS
NL-SLT-SLR-1E30	1 No 30 Watts 12V CFL	Assemmetrical
COLUMN CODE	HEIGHT	
C3-B12-P3114-SOLAR	3000MM	

MOUNTING SUITABILITY

ON PCC BASE

DESCRIPTION

'NOVA'

LUMINAIRE

Sheet aluminium body, duly powder coated . Figured acrylic diffuser, through EPDM Gasket. Complete with lamp holder, suitable for use with 1 Nos 30 Watts CFL Lamp at 12 V DC supply, Provided with 300 mm long mounting arm for fixing on Square column.Mounting column height 3000mm made of pipe section of 114mm dia, mounted on a base plate of 300mm dia. The column has a junction chamber for mounting the control switching system. Column is provided with a rotating bracket for mounting of Solar Panel, rotatable is horizontal plane.

DESCRIPTION

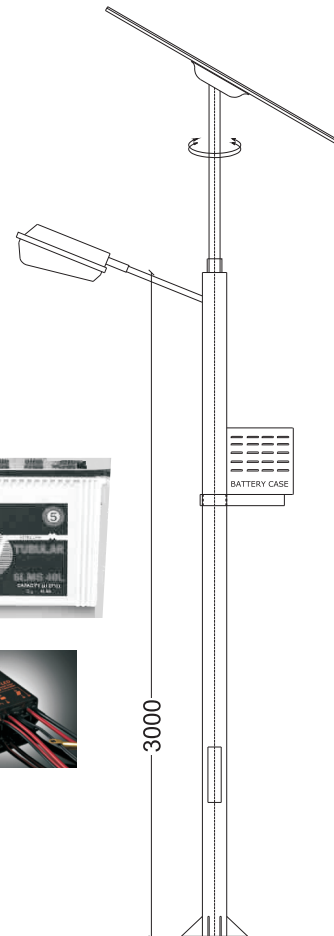
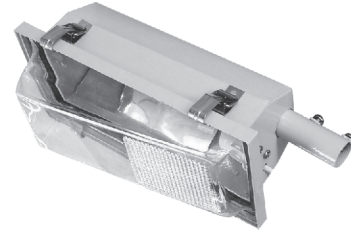
Nominal Power Pmax (W)	75 Wp
Voltage at maximum Power - Vmp (V)	17.4 DC
Current at maximum Power - Imp (A)	6.896
Open circuit Voltage - Voc (V)	21.6
Short Circuit Current - Isc (A)	7.906
Maximum System Voltage	600 VDC
Maximum Series Fuse Rating	10 A
Temperature Coefficient Pmax	-0.43 % /°C
Temperature Coefficient - Vo	-0.35 % /°C
Temperature Coefficient - Isc	0.05 % /°C
Solar Cells per Modules - Unit	36 (9x4 Matrix)
Solar Cell Size and Type-multi-crystallin	156x156 mm
Dimensions:	1347x672x42

SOLAR CHARGER CONTROLLER

Battery State-of-Charge display LED Charge and discharge status display Load status indication Boost/absorption/float PWM-regulation. Programmable Time / Twilight based auto switching. Optional dimming. Integrated temperature compensation Covered terminals Full solid-state protection.

NOTE

Luminaire with Solar accesories are offered SEPARATLY as well as with coordinated decorative column. Please specify your requirement



STREET-AREA LIGHTING

ST-07